

## STAR TUP992 USB Printer for SIMATIC HMI

### Compatibility

Star TUP992 with optional USB communication module (IFBD-HU05) and installation of the suitable panel driver is compatible with:

- TP177B PN/DP(6AV6642-0BA01-1AX0)      3.0
- OP177B PN/DP(6AV6642-0DA01-1AX0)      3.0
- TP177B DP mono (6AV6642-0BC01-1AX0)      3.0
- OP177B DP mono (6AV6642-0DC01-1AX0)      3.0
- TP277 6”(6AV6643-0AA01-1AX0)      3.0
- OP277 6”(6AV6643-0BA01-1AX0)      3.0
  
- MP277 8” KEYS (6AV6643-0DB01-1AX1)      5.0
- MP277 8” Touch (6AV6643-0CB01-1AX1)      5.0
- MP277 10” KEYS (6AV6643-0DD01-1AX1)      5.0
- MP277 10” Touch (6AV6643-0CD01-1AX1)      5.0
- MP377 12” KEYS (6AV6 644-0BA01-2AX0)      5.0
- MP377 12” Touch (6AV6 644-0AA01-2AX0)      5.0
- MP377 15” Touch (6AV6 644-0AB01-2AX0)      5.0
- MP377 19” Touch (6AV6 644-0AC01-2AX0)      5.0

3.0: Operating System Windows CE 3.0

5.0: Operating System Windows CE 5.0

By using this printer you can use ALL printing features available on the panels listed above (alarms buffer printing, real time alarms printing, reports printing and so on). Please see the *Printing Notes* chapter for restrictions.

### TUP992 + USB communication module IFBD-HU05 drivers Installation Procedure

To allow users to install drivers simply, two setup files have been released on the same engineering station where WinCC Flexible (with its PROSAVE utility) has been already installed. The suitable setup file to be executed depends on the SIMATIC HMI panel you use:

Star TUP992 printer. Setup file for:

- TP177B PN/DP(6AV6642-0BA01-1AX0)
- OP177B PN/DP(6AV6642-0DA01-1AX0)
- TP177B DP mono (6AV6642-0BC01-1AX0)
- OP177B DP mono (6AV6642-0DC01-1AX0)
- TP277 6”(6AV6643-0AA01-1AX0)
- OP277 6”(6AV6643-0BA01-1AX0)

<http://www.star-emea.com/downloads/SetupSTAR800CE3.exe>

Star TUP992 printer. Setup file for:

- MP277 8" KEYS (6AV6643-0DB01-1AX1)
- MP277 8" Touch (6AV6643-0CB01-1AX1)
- MP277 10" KEYS (6AV6643-0DD01-1AX1)
- MP277 10" Touch (6AV6643-0CD01-1AX1)
- MP377 12" KEYS (6AV6 644-0BA01-2AX0)
- MP377 12" Touch (6AV6 644-0AA01-2AX0)
- MP377 15" Touch (6AV6 644-0AB01-2AX0)
- MP377 19" Touch (6AV6 644-0AC01-2AX0)

<http://www.star-emea.com/downloads/SetupSTAR800CE5.exe>

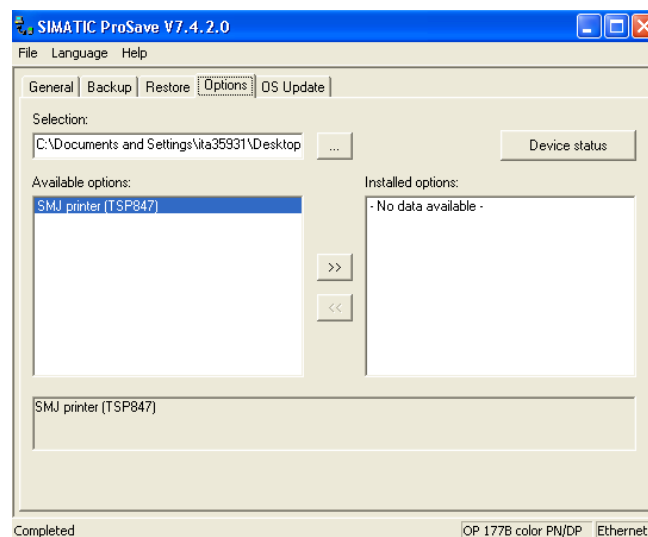
Note: The default printer drivers (and Windows CE File Registry elements too) installation path is as below:

C:\Program Files\Common Files\Siemens\PTProSave\AddOn\Printer STAR\

In case ProSave had been previously installed at a different path, please modify the default installation path.

## How to transfer the Star TUP992 driver into panels

Once the program setup has been performed, run ProSave utility, select the target panel model, click on the "Options" tab and select the "**SMJ printer (TUP992)**".



Note: **SMJ printer (TUP992)** driver will be available for compatible panels only.

If the user needs to print with Star TUP992 printer on ALL Simatic HMI panels, both **Setup Star 800 CE 3** and **Setup Star 800 CE 5** files must be performed.

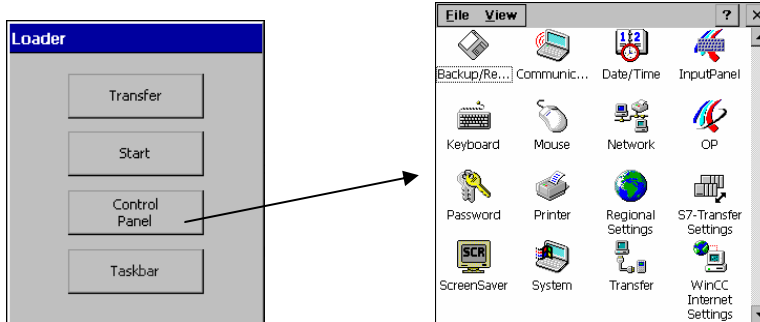
Connect the HMI panel to the PC with the suitable transferring cable and start downloading by pressing the button



No further operations are requested on HMI panel but the selection of the printer via Windows CE control Panel (please see *How to Select Printer* chapter).

## How to select printer

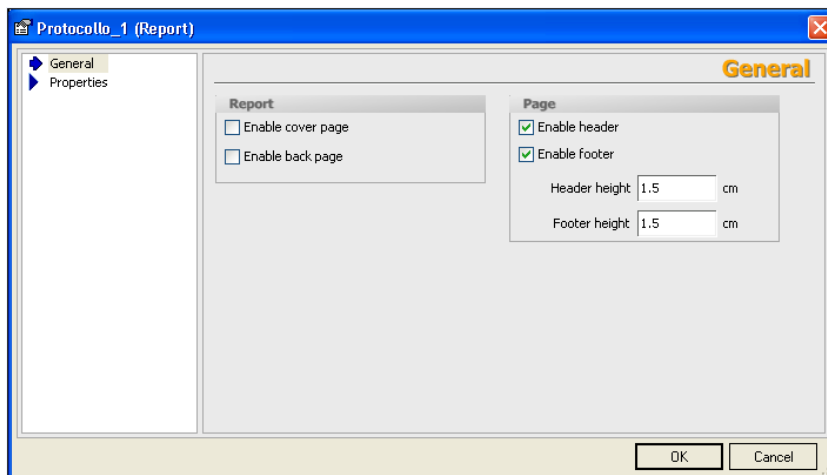
After switching the HMI panel, please select the CONTROL PANEL button on the Loader window and open the PRINTER element



Among various default printer drivers, the user will also see the one named [SMJ Raster Printer \(832dots\)](#) for TUP992: he will need both to highlight it, to set the interface as USB1 and to disable the option Draft Mode to allow the printer to adapt printing output to the paper size.

### Printing notes

- While configuring printing protocol, if the check boxes “Enable cover page” or “Enable back page” have been selected at report level, the TUP992 printer performs an automatic cutting of the paper sheet into 3 parts (cover, main page - sheet -, back page). To avoid this, please uncheck both check boxes into the protocol’s properties dialog as shown in the screenshot below.



*Suggestion: please activate the check boxes "Enable header" and "Enable Footer" at page level.*

- Following printing notes are valid while using Star TUP992 printer on HMI panels with Operating System Windows CE 5.0. If TUP992 is connected to HMI Panels with Operating System Windows CE 3.0 (please see the Panels list in the *Compatibility* chapter) the following printing notes can be skipped.
  - When “Enable cover page” and “Enable back page” have been selected at report level, it may result in a timeout error with the first printout: in this case, please switch off the printer, then turn it on again.
 

*Suggestion: "Enable cover page" and "Enable back page" shouldn't be activated to avoid the automatic sheet cutting as described in the previous note. Please always and exclusively use "Enable header" ed "Enable footer" options.*

- In very rare cases some synchronisation errors have been reported during switching on of both HMI panels and printer due to different "Power Sequencing" of the devices: in some cases if the printer is switched on AFTER the HMI panel, timeout errors may occur or the USB device (the printer) is not recognized by the HMI panel. To avoid this situation it is strongly recommended to switch on both the HMI panel and the printer at the same time (which is generally standard procedure) or to switch on the printer BEFORE switching the panel on.
- It's recommended not to perform the function "Print Page" on the MP377 panel series because the use of the Star driver could result in an incorrect printout.