

star cloudPNT SOLUTIONS

Remote labelling & ticketing with peripheral support without the need for PC hardware.

The **most connected** printers in POS PC-Free remote printing to anywhere in the world

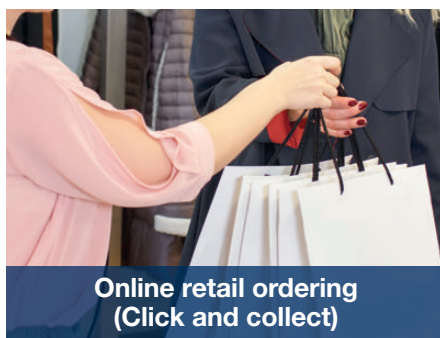


Remote Labelling, Receipting & Ticketing with Cloud Based Peripheral Support

For consumer facing online ordering websites



Online fast food deliveries



Online retail ordering
(Click and collect)



Event ticket ordering

Corporate database driven print tasks



Shelf edge labelling



Logistics / Warehousing
Order processing and picking



Product labelling

NEW star cloudPRNT

The World's Largest Range of Multi-Platform Remote Cloud Printers

Intelligent printing for modern Cloud retail, logistics and hospitality.

Star's stylish mC-Printers for dramatically low cost 58mm and 80mm wide remote receipting and ticketing from the Cloud.



Star's compact mC-Print printers provide the choice of 58mm or 80mm wide receipt printing using StarPRNT mode and are supplied with:

- ▶ All of the mC-Print Series is Cloud-ready even the low cost, entry-level MCP20 with LAN & USB is also capable of remote Cloud printing
- ▶ MCP21LB, MCP31L & MCP31LB features 2 USB host ports for local or Cloud based peripheral control of Star's SCD222 customer display and/or Star's 1D or the Symbol/Zebra DS9208 2D scanner
- ▶ Up to 5 interfaces for traditional or Tablet POS use – LAN/USB/iOS direct USB with charging/Bluetooth and CloudPRNT
- ▶ Star's mC-Print App will assure easy firmware as and when new features become available

star cloudPRNT-POS

Tablet POS with Multiple USB Peripheral Control



It is well known Tablet POS has many advantages over traditional Terminal POS but the key disadvantage until now has been the inability to attach peripherals, let alone control them from Cloud-based software.

Once again, Star's innovation and ability to provide market-leading technology at the right price will allow retailers and restaurateurs to take advantage of all the benefits of Tablet POS including:

- ▶ Lower cost, cabled hardware
- ▶ Small, attractive footprint

Your iOS Tablet POS can now be fully cabled with direct printer connectivity over the lightning USB interface providing device charging as well as control of Star peripherals over USB. *No expensive Bluetooth scanners or displays needed.*

- ▶ Versatile Cloud-based software that can be quickly changed according to market developments with fast, in-store scalability – add another POS station device by simply logging into your supported, current software

Uniquely, Star's range of CloudPRNT POS, kitchen and label printers can all run Cloud-based software with peripheral support on any tablet or smartphone – any device with a web browser with everything controlled through the printer.

mC-Print unusually offers, via wired Ethernet connection with status, both an 80mm receipt and a 58mm receipt solution for those looking for sustainable solutions. The mC-Print3 has a paper saving 2mm top margin, whilst the compact mC-Print2 offers 'credit card' style receipting saving paper and money.

2 Host USB Ports



Remote Printing with Cloud-Based Multiple Peripheral Control

Star's new **CloudPRNT technology** for remote printing directly from your web server to Star printers anywhere in the world is now available across Star's traditional and very latest range of printers.

Star has carefully documented all commands needed for the two different Star CloudPRNT solutions. The Developer Guide & Set-Up Manual can be found in the Star Micronics Developers section at:

www.starmicronics.com/support/SDKDocumentation.aspx

Star HI X Printers for 80mm and 112mm wide receipting, labelling, ticketing and red/black matrix kitchen printing from the Cloud.



Star's **NEW** HI X Printers or HI01X/HI02X interface upgrade options provide connectivity at every level using Star Line mode or be future-proofed using traditional interfaces, knowing you can go to the Cloud at virtually half the replacement printer cost.



- ▶ **WiFi Ready** using a compatible, locally sourced USB WiFi dongle
www.star-emea.com/products/hixconnect
- ▶ **Dual Interface** USB/LAN
- ▶ Star's **WebPRNT** LAN platform independent HTML/JavaScript printing with web-based applications to local network

- ▶ **CloudPRNT** internet connection through WiFi, LAN with remote document printing from your web server. Perfect for restaurant aggregation, warehousing etc.
- ▶ Star **Peripheral Ready** no PC required peripheral use including scanners and displays with 2 USB host ports

ALL AVAILABLE USING...

- ▶ **Star's 300mm/second, Superfast printer** or upgrade your TSP654II with traditional interface when you are ready to go to the Cloud. No need to replace the printer – just replace the interface at half the cost (available NOW using HI01X)
- ▶ **Star's Receipt, Label and Ticket printers** TSP743II or TSP847II (using up to 0.15mm thick media) can all use the new exciting HI X Interface on 80/112mm wide tickets and labels (HI01X)
- ▶ **Star's Kitchen printer** (HI02X) The high-speed, two colour SP700 Matrix

star cloudPRNT-POS TSP654II HI X

Star's TSP654II with IFBD-HI01X interface with CloudPRNT...

can turn any mobile device – Windows, Android, iOS, Linux etc., into a full POS system with peripheral support providing IP connectivity via Wired Ethernet with status & multiple peripheral support (via 2 USB host ports) for Star's SCD222 customer display and Star 1D/Symbol 2D barcode scanners. Or using the WiFi dongle option with one Star peripheral or multiple peripherals, if used with USB hub.





THERMAL

mPOS

MOBILE

MATRIX

LOGISTICS

STAR CLOUDPRNT SERIES	mC-Print2 20/21LB	mC-Print3 31L/31LB	TSP654II CloudPRNT	TSP743II CloudPRNT	TSP847II CloudPRNT	SP742 CloudPRNT	HI X CloudPRNT Interface
							
Description	Direct Thermal Receipt & Ticketing			Direct Thermal Label, Receipt & Ticketing on Media up to 0.15mm thick		Kitchen Matrix	End User "Plug-in" Interface
		Packaged Tablet Terminal Printing Solutions		Packaged Specialist Kiosk Thermal			IFBD-HI01X/ HI02X
	Top Loading / Front Paper Exit multi-interface cube printer. mC-Print21L: CloudPRNT. mC-Print21LB: Lightning iOS, CloudPRNT & multi-Peripheral Hub	Front Loading / Paper Exit multi-interface cube printer with Lightning iOS and PC-Free, Remote printing and multi-Peripheral Hub	High Speed, Entry-Level Printer with PC-Free, Remote printing and multi-Peripheral Hub	High Resolution multi-functional 80mm Printer with a 10cm Paper Roll for 60% more Paper than a standard 80mm Roll	Unique 112mm wide Printer with A4-A6 auto scaling raster driver for lower cost A4 replacement printing with 10cm roll and multi-Peripheral Hub	9-Pin High Speed / Quality Matrix printer capable of original + two copies and optional Red & Black printing. PC-Free, remote CloudPRNT with multi-Peripheral Hub	End-user plug-in upgrade options for TSP654II/ TSP743II/ TSP847II/ SP742 for PC-Free, remote CloudPRNT applications with multi-Peripheral hub
Max Print Speed	100mm/sec	250mm/sec	300mm/sec	250mm/sec	180mm/sec	up to 8.9 ips	Varied up to 300mm/sec.
Resolution	203 dpi	203 dpi	203 dpi	203 dpi, 406 x 203 dpi selectable	203 dpi, 406 x 203 dpi selectable	7 x 9 half dot / 5 x 9	203 dpi
Autocutter	Full or Partial (Guillotine)	Partial Cut (Guillotine)	Partial Cut (Guillotine)	Full or Partial (Guillotine)	Full or Partial (Guillotine)	Full or Partial (Guillotine)	See relevant printer: SP742, TSP654II, TSP743II, TSP847II
Paper Width	58mm	80mm (58mm with guide)	80mm (58mm with guide)	80mm (default) 82.5, 58mm selectable	112mm Standard 80mm Paper Guide option	76mm default, 69.5, 58mm Paper Guide option	See relevant printer: SP742, TSP654II, TSP743II, TSP847II
Paper Thickness	0.053 – 0.075mm	0.053 – 0.075mm	0.065 – 0.085mm	0.065 – 0.15mm	0.065 – 0.15mm	0.06 to 0.085mm (1 + 2 copies)	See relevant printer: SP742, TSP654II, TSP743II, TSP847II
Paper Roll Standard option	50mm	83mm	83mm	100mm	100mm	85mm	See relevant printer: SP742, TSP654II, TSP743II, TSP847II
Media Presentation	Front Paper Exit/ Top Paper Loading	Front Paper Exit/ Front Paper Loading	User Selectable Paper Delivery option with Mounting Bracket included	User Selectable Paper Delivery option with Mounting Bracket included & optional Paper Exit Guide	User Selectable Paper Delivery option	Vertical or Horizontal mode	See relevant printer: SP742, TSP654II, TSP743II, TSP847II
Print Width	48, 50.8, 54mm	72mm, 50.8mm (with guide)	72mm, 50.8mm (with guide)	80mm max	104mm	63/60/45mm	See relevant printer: SP742, TSP654II, TSP743II, TSP847II
Sensors	Paper End, Cover open	Paper End, Near End, Cover open	Paper End, Near End, Cover open	Black Mark, Paper End, Cover Open, Near End Horizontal & Vertical	Black Mark, Paper End, Cover Open, Near End Horizontal & Vertical	Black Mark, Paper End (Near End option)	See relevant printer: SP742, TSP654II, TSP743II, TSP847II
Interface	mC-Print20: USB Traditional, Ethernet LAN & CloudPRNT. mC-Print21LB: USB Traditional, Lightning iOS USB "Data & Charge", PC-Free remote CloudPRNT, LAN plus 2 host ports	USB Traditional, Lightning iOS USB "Data & Charge", PC-Free remote CloudPRNT, LAN (LB version also features Bluetooth) plus 2 host ports	Star HI01X interface with LAN & USB plus 2 host ports. Can use WiFi dongle option. Plug-in: Serial, Parallel, USB, Ethernet LAN interface options also available	Buy TSP743II non interface version with IFBD-HI01X interface with LAN & USB plus 2 host ports. Can use WiFi dongle & other interface options	Buy TSP847II non interface version with IFBD-HI01X interface with LAN & USB plus 2 host ports. Can use WiFi dongle & other interface options	Buy SP742 non interface version with IFBD-HI02X interface with LAN & USB plus 2 host ports. Can use WiFi dongle & other interface options	Star HI01X/ HI02X (SP742) interface option with LAN & USB plus 2 host USB ports with multi-peripheral support. Can use WiFi dongle option
Unique Ethernet Print on Disconnection feature	Yes	Yes	Standard with IFBD-HI01X option	Standard with IFBD-HI01X option	Standard with IFBD-HI01X option	Standard with IFBD-HI01X option	Yes
Power Consumption	19 W Printing 1.2 W Standby	36 W Printing 1.44 W Standby	45.6 W Printing 3.6 W Standby	43.2 W Printing 3.6 W Standby	48 W Printing 2.88 W Standby	30 W Printing 10 W Standby	See relevant printer: SP742, TSP654II, TSP743II, TSP847II
Operating Environment	Temperature: 5°C to 45°C Humidity: 10% to 90% RH	Temperature: 5°C to 45°C Humidity: 10% to 90% RH	Temperature: 5°C to 45°C Humidity: 10% to 90% RH	Temperature: 5°C to 45°C Humidity: 10% to 90% RH	Temperature: 5°C to 45°C Humidity: 10% to 90% RH	Temperature: 0°C to 50°C Humidity: 10% to 90% RH	See relevant printer: SP742, TSP654II, TSP743II, TSP847II
Energy Star Qualified Power Supply	External PS-60A-24C included	External PS-60A-24C included	External PS60 (option)	External PS60 (option)	External PS60 (option)	Internal PSU with cable supplied	See relevant printer: SP742, TSP654II, TSP743II, TSP847II
Reliability	60 million lines 1 million cuts	60 million lines 2 million cuts	60 million lines 2 million cuts	60 million lines 2 million cuts	37 million lines 2 million lines	22 million lines 1 million lines	See relevant printer: SP742, TSP654II, TSP743II, TSP847II
Dimensions / Weight	96 x 113 x 100mm 0.8kg	132 x 140 x 125mm 1.3kg	142 x 203.5 x 132 1.6kg	147 x 213 x 148 1.75kg	180 x 213 x 148 1.9kg	160 x 245 x 152 3.18kg	See relevant printer: SP742, TSP654II, TSP743II, TSP847II
Peripheral Host Ports / Hub	mC-Print21LB only: 2 USB host ports for Star SCD222 Customer Display, Star 1D & Symbol/ Zebra DS9208 2D scanners	2 USB host ports for Star SCD222 Customer Display, Star 1D & Symbol/ Zebra DS9208 2D scanners	2 USB host ports for Star SCD222 Customer Display, Star 1D & Symbol/ Zebra DS9208 2D scanners / WiFi dongle	2 USB host ports for Star SCD222 Customer Display, Star 1D & Symbol/ Zebra DS9208 2D scanners / WiFi dongle	2 USB host ports for Star SCD222 Customer Display, Star 1D & Symbol/ Zebra DS9208 2D scanners / WiFi dongle	2 USB host ports for Star SCD222 Customer Display, Star 1D & Symbol/ Zebra DS9208 2D scanners / WiFi dongle	2 USB host ports for Star SCD222 Customer Display, Star 1D & Symbol/ Zebra DS9208 2D scanners / WiFi dongle
Included in box	PS60C external PSU, Paper Guide, Paper Roll	IPX2 certification, PS60C external PSU, Paper Guide, Paper Roll	PS60 included in box, Paper Roll, 58mm Guide, Setup Sheet, Power Switch Cover, Wall Mount Kit	Paper Roll, 58mm Guide, Setup Sheet, interface & Power Switch Cover, Wall Mount Kit	Paper Roll, Set Up Sheet	Ribbon, Paper Guide, Set Up Sheet, Power Cable (Internal PSU)	See relevant printer: SP742, TSP654II, TSP743II, TSP847II
Options	• IFCV-MCP2 Cable Cover • Buzzer BU01-24-A See www.Star-EMEA.com	• WB-MC30 Wall Mount bracket • Star 1D BCR-POP Scanner • DS9208 2D Scanner, • SCD222 Customer Display • Buzzer BU01-24-A See www.Star-EMEA.com	• Star 1D BCR-POP Scanner • DS9208 2D Scanner • SCD222 Customer Display • Kitchen Buzzer • other Plug-in interfaces, • WiFi Dongle • Splashproof cover See www.Star-EMEA.com	• PS60 PSU, • Star 1D BCR-POP Scanner • DS9208 2D Scanner • SCD222 Customer Display • Buzzer • TSP743II Blue or Green & Red LED Bezel • other Plug-in interfaces, • WiFi Dongle • Splashproof cover See www.Star-EMEA.com	• PS60 PSU, • Star 1D BCR-POP Scanner • DS9208 2D Scanner • SCD222 Customer Display • TSP847II WB-T800 Wall Mount Bracket • Buzzer • other Plug-in interfaces, • WiFi Dongle See www.Star-EMEA.com	• PS60 PSU, • Star 1D BCR-POP Scanner • DS9208 2D Scanner • SCD222 Customer Display • TSP847II WB-T800 Wall Mount Bracket • Buzzer • RC700 Red/Black, Black & Laundry Ribbons See www.Star-EMEA.com	• Star 1D BCR-POP Scanner • DS9208 2D Scanner • SCD222 Customer Display • Buzzer • WiFi Dongle See www.Star-EMEA.com